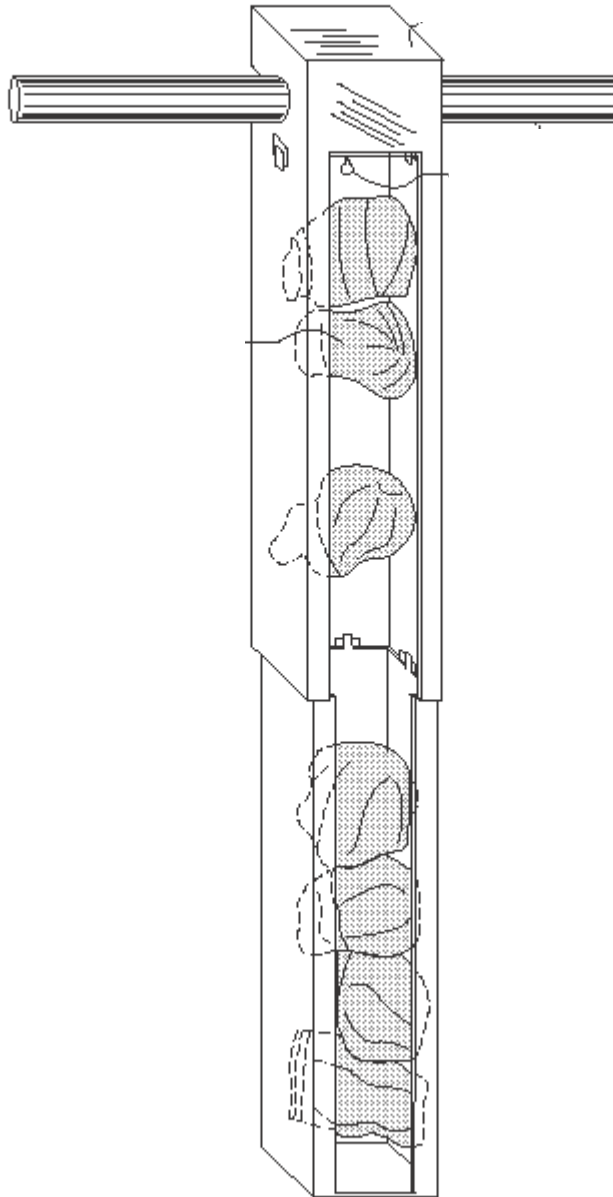


The SockTube™

the hanging telescoping garment organizer

patent pending

- ➔ hangs in your closet
- ➔ keeps your socks (or other small clothing items) neat, organized, and visible
- ➔ makes it easy to match your accessories to your clothes
- ➔ stores your socks, underwear, bras, hose, ties, and scarves in the closet, near the rest of your clothes
- ➔ includes a side clip for single sock storage, until the lost matching sock is found



The original concept of this device was for socks, but the patent has been filed with a name: telescoping garment organizer, indicating a more general use.

socks • underwear • bras • hose • ties • scarves

The SockTube™

Typically, socks and accessories are scattered in a dresser drawer in the bedroom and clothing is hung in the closet.

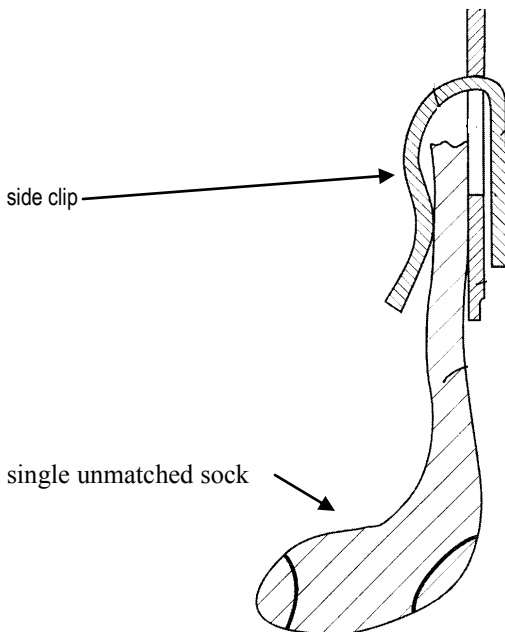
Most people like to match their accessories with their pants, jackets, and the rest of their outfit. In order to match accessories and clothes, the clothes need to be carried from the closet to the bedroom, or vice versa, to see if the colors match. The SockTube organizes and stores socks and accessories in a clear tube that hangs in the closet with the clothes, allowing for an easy comparison of clothing/accessory colors. It also provides a place to store single socks, for an easy match with the missing sock.

The SockTube™ is a square, telescoping tube, made of clear plastic. It is approximately 3" x 3", and 24" long, when extended. It is solid on three sides, and on the bottom. The fourth side of the tube is mostly open, consisting of only a lip, approximately 1/4" on each vertical side, wide enough to prevent the rolled up socks or accessories from falling out, but leaving an opening about 2.5" wide. It has an integrated hook on the top to allow it to hang from a closet bar. Rolled up socks or other small garments can be inserted into the tube, where they will easily slide down the tube. All can be pulled through the 2.5" opening at any point along the 24" tube.

The features and benefits of the SockTube™ are:

clear sides
hook on top
clip on the back
telescoping sides
tube shaped
hangs in the closet

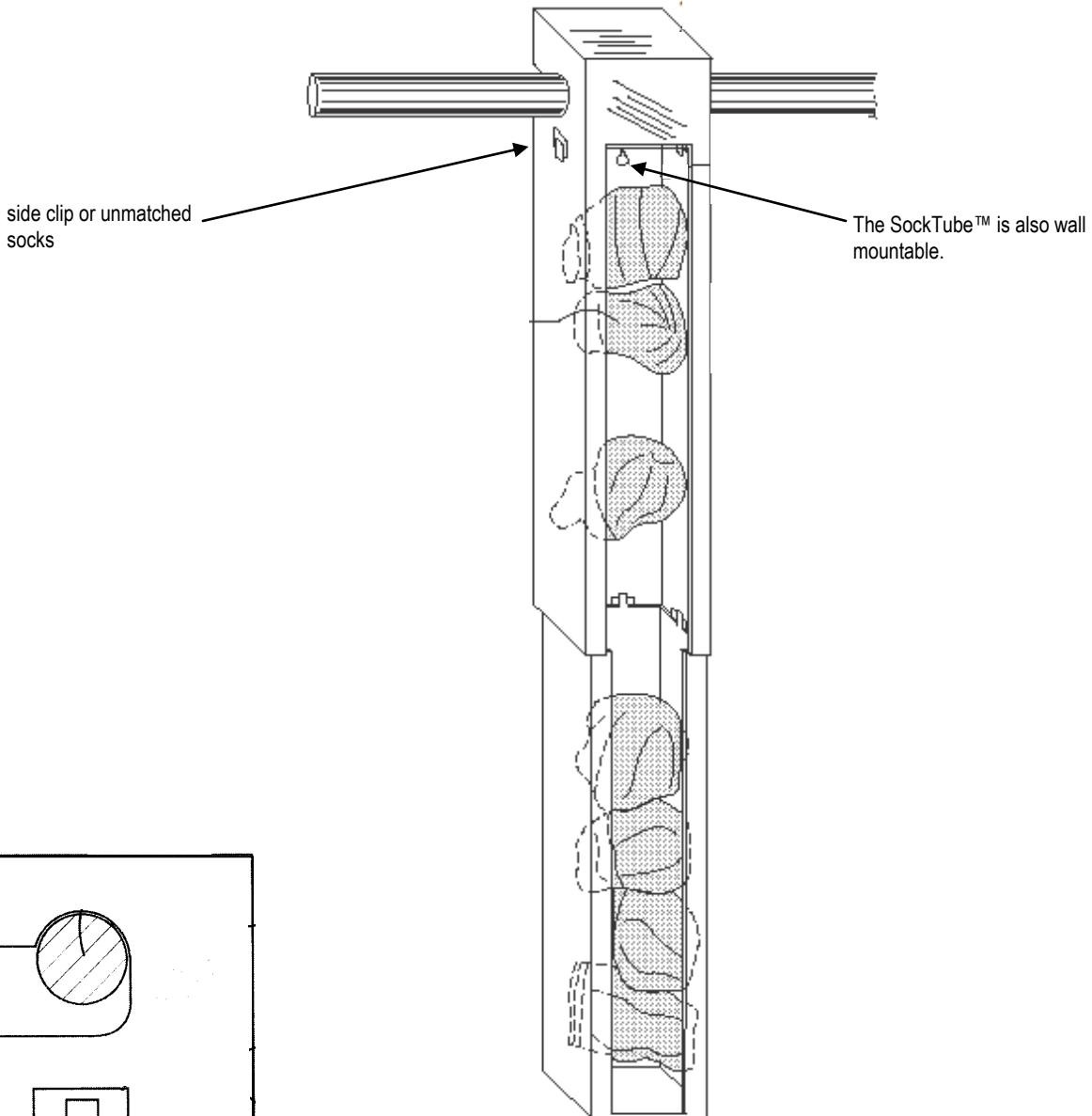
socks and accessories inside are visible
socks and accessories can be hung in the closet, instead of scattered in drawers
provides a convenient place to put unmatched, single socks
easy to package for retail sales
socks and accessories can be stacked and organized
socks and accessories are stored near clothes they need to match.



The SockTube™ has a clip on the side, to attach single socks until the matching sock is found in the next load of wash.

The SockTube™

The telescoping feature allows easier / smaller retail packaging. The smaller tube section fits inside of the larger tube section. The inside bottom of the larger tube has a flange that protrudes around the inside of the bottom edge. The top of the smaller tube has a corresponding flange that protrudes around the outside of the top edge. When the SockTube is extended, the flanges meet, preventing the two tube pieces from becoming disconnected.



The SockTube™ has an integrated hook on the top to allow it to hang from a closet bar. It is also wall mountable, if desired.